



C Commercial	M Military	A Avionics	S Space
------------------------	----------------------	----------------------	-------------------

RF Characteristics

Frequency GHz	VSWR (max)	Isolation dB (min)	Ins. Loss dB (max)
0-1	1.15	75	0.15
1-4	1.25	60	0.20
4-8	1.35	60	0.35
8-12.4	1.50	60	0.50
12.4-18	1.50	60	0.50

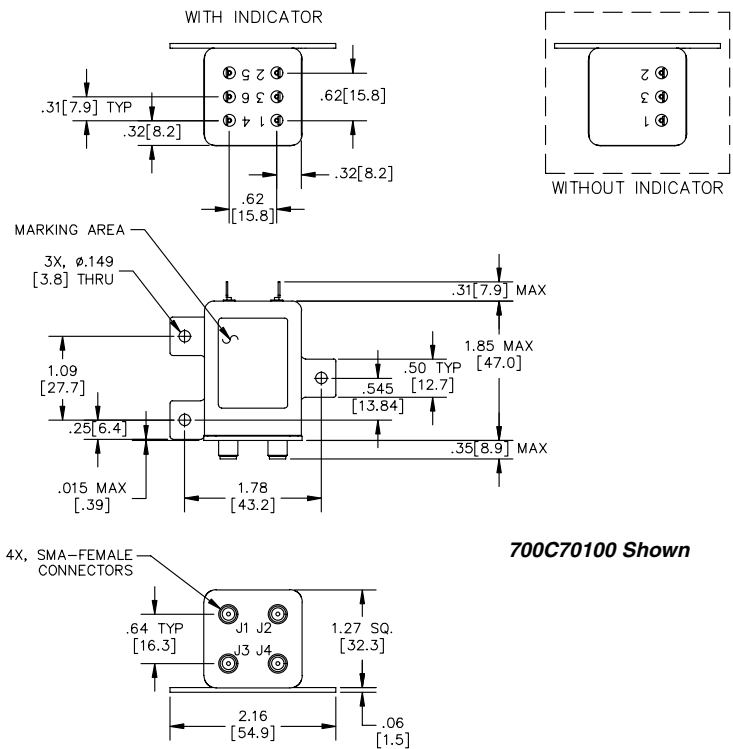


700 Series Transfer Latching

Specifications

- Operating Voltage:**
(across temperature range)
28 Vdc (20-30 Vdc)
- Coil Current (max @ nom.Vdc & 20°C):**
28 Vdc 65mA
- Switching Time:**
20 mS maximum
- Operating Temperature:**
-55°C to +85°C
- Mechanical Life, Cycles:**
100,000 minimum
- Vibration, Operating:**
20g's sine/random
- Mechanical Shock, Non-Operating:**
50G, 1/2 Sine, 11mS
- Nominal Weight:**
3.5 oz., (100g.)

Mechanical



Part Number Selection

