

**RF Characteristics**



**5A1 Normally Open Terminated, SMA**

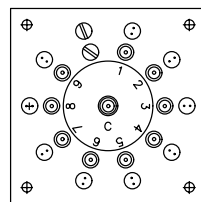
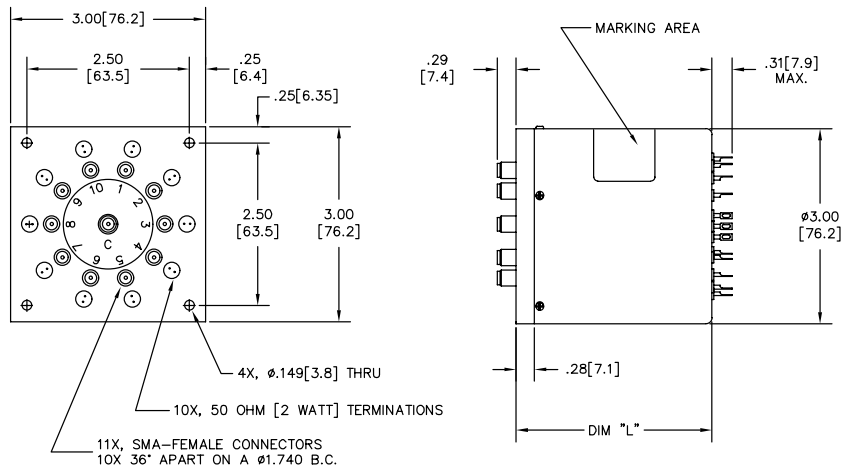
Frequency GHz	VSWR (max)	Isolation dB (min)	Ins. Loss dB (max)
DC-4	1.20	70	0.20
4-8	1.30	65	0.30
*8-12.4	1.40	60	0.40
*12.4-18	1.60	55	0.60

Note: RF Power for the terminated port is limited by the termination.  
\* "K" option only

**Specifications**

- Operating Voltage:** (across temperature range)  
12 Vdc (11-14 Vdc)  
28 Vdc (24-32 Vdc)
- Coil Current (max @ nom.Vdc & 20°C):**  
12 Vdc 550 mA  
28 Vdc 240 mA
- Switching Time:**  
20 mS maximum
- Operating Temperature:**  
-25°C to +65°C (Standard)  
-55°C to +85°C (Extended "T" Option)
- Mechanical Life, Cycles:**  
1,000,000 minimum
- Vibration, Operating:**  
10 G RMS, 20-2000 Hz
- Mechanical Shock, Non-Operating:**  
50 G, 1/2 Sine, 11 mS
- Nominal Weight:**  
17.5 oz., (496g.)

**Mechanical**



9 POSITION

5A1-530823 Shown

DIM "L" (MAX)	MODEL	ELEC. SCHEM.
1.93 [49.0]	5X1-5X0803	3
2.27 [57.6]	5X1-5X0823	3
2.27 [57.6]	5X1-5X0803A	4
2.56 [65.0]	5X1-5X0823A	4

For Electrical Schematic see page # 3-9

**Part Number Selection**

