

535-565 Series
Normally Open, SMA

RF Characteristics

Frequency GHz	VSWR (max)	Isolation dB (min)	Ins. Loss dB (max)
DC-4	1.20	70	0.20
4-8	1.30	65	0.30
8-12.4	1.40	60	0.40
12.4-18	1.50	60	0.50
*18-22	1.60	50	0.60
*22-26.5	1.80	40	0.70

* "K" option only.

Specifications

Operating Voltage:

(across temperature range)
12 Vdc (11-14 Vdc)
28 Vdc (24-32 Vdc)

Coil Current (Nominal):

12 Vdc 110 mA
28 Vdc 65 mA

Switching Time:

20 mS maximum

Operating Temperature:

-25°C to +65°C (Standard)
-55°C to +85°C (Extended "T" Option)

Mechanical Life, Cycles:

1,000,000 minimum

Vibration, Operating:

10G RMS, 20-2000 Hz

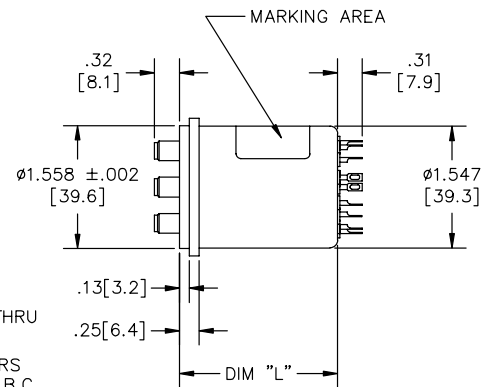
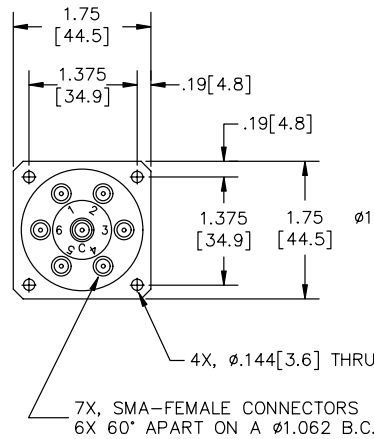
Mechanical Shock, Non-Operating:

50G, 1/2 Sine, 11mS

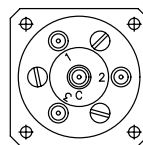
Nominal Weight:

4.0 oz., (115g.)

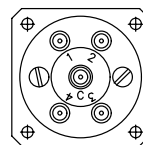
Mechanical



565-530822 Shown



3 POSITION



4 POSITION

DIM "L" (MAX)	MODEL	ELEC. SCHEM.
1.41 [35.8]	5X5-5X08	1
1.90 [48.3]	5X5-5X0822	1
1.70 [43.2]	5X5-5X0802A	2
2.08 [52.8]	5X5-5X0822A	2

For Electrical Schematic
see page # 3-9

Part Number Selection

535 J - 5 2 08 02 A

Family	Special Options	Actuator	Coil Voltage	Connectors	Indicators	Circuit Options
535 = SP3T 545 = SP4T 565 = SP6T	C = Mounting Bracket J = 9 or 15* Pin 'D' Connector K = 26.5 GHz P = Power Plug R = (-) Com T = -55° to +85° C	2 = Failsafe, Position 1 5 = Normally Open 6 = Failsafe, Position 1 Suppression Diodes (Com +) 9 = Normally Open Suppression Diodes (Com +)	2 = 12Vdc 3 = 28Vdc 8 = 24Vdc 9 = 15Vdc	07 = BMA Female 08 = SMA Female	02 = No Indicators 22 = SPST Indicators	A = TTL High E = BCD Decoding L = TTL low