

417LP Series Transfer Latching Self Cutoff

RF Characteristics

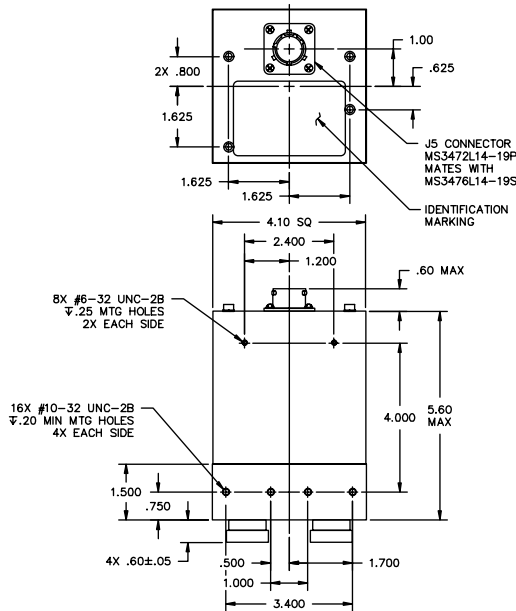
Frequency MHz	VSWR (max)	Isolation dB (min)	Ins. Loss dB (max)
20-2000	1.5:1	65	0.30

Frequency Range	RF Power Watts
20-100	4Kw Continuous
100-1200	3Kw Continuous
1200-2000	1Kw Continuous

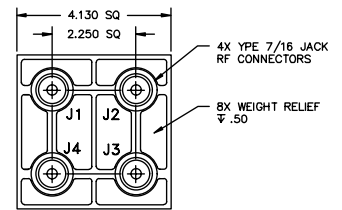
Specifications

- Operating Voltage:** (across temperature range)
28 Vdc (25-31 Vdc)
- Coil Current (max @ nom.Vdc & 20°C):**
28 Vdc 3 Amps
- Switching Time:**
500 mS maximum
- Operating Temperature:**
-40°C to +70°C
- Mechanical Life, Cycles:**
100,000 minimum
- Vibration, Operating:**
10 G RMS, 20-2000 Hz
- Mechanical Shock, Non-Operating:**
50 G, 1/2 Sine, 11 mS
- Nominal Weight:**
5 lbs.

Mechanical



417LP-435432 Shown



BOTTOM VIEW

For Electrical Schematic see page # 4-7

Part Number Selection

